

READY TO COME HOME TO FLORENCE GARDENS?



“The Harper”

BUILD THIS HOME IN
THE TOWN GREEN DISTRICT FOR

\$252,000

plus the price of your lot

4 BEDROOMS | 3.5 BATHS

2400 SQ FT

TWO MASTER SUITES

suitable for lots 14, 15, 16, 44, 45, 46 and 47

construction by

GARLON HOMES

a Florence Gardens Builder Partner



Signature Finishes for Homes in the Town Green District

STYLISH INTERIORS

9' or higher ceilings
Granite countertops throughout
Wood floors in main living areas
Ceramic tile in wet areas
Durable carpet in bedrooms
Stainless steel appliances
Complete home security system

UNDENIABLE CURB-APPEAL

Covered wood front porch
HardiePlank® lap siding
Fully landscaped front, side and rear
yard with sprinkler system
Includes a two-car carport with
separate closed in storage areas

ENERGY-EFFICIENCY

R-30 blown insulation in ceilings
R-13 wall batt insulation in
exterior and plumbing walls
13 seer AC with digital
thermostat controls
Energy efficient 50-gallon
electric hot water heater



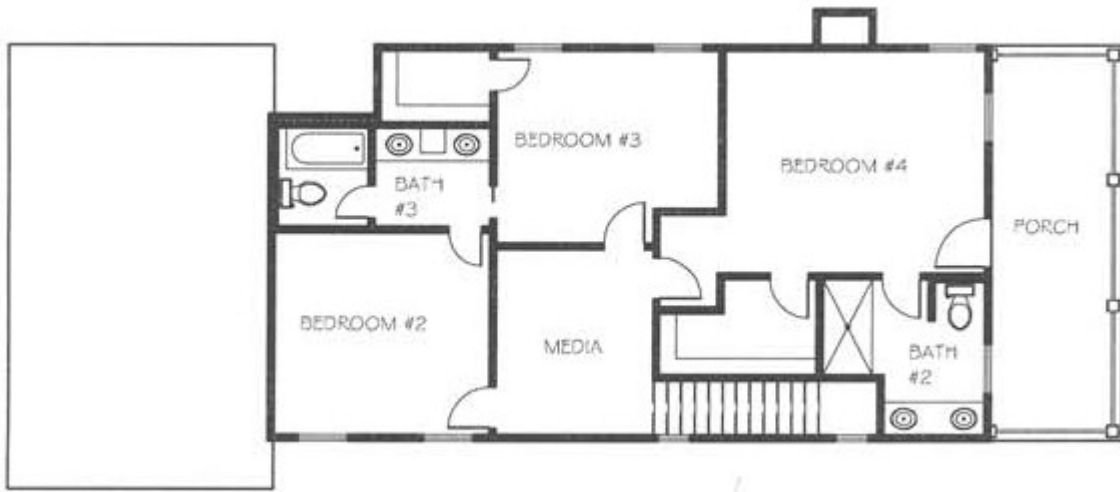
FLORENCE GARDENS

New neighborhood. Old charm.

MODEL HOME OPEN DAILY — Weekdays 1:00 p.m. to 5:00 p.m. | Weekends 2:00 p.m. to 4:00 p.m. | *or by appointment*
www.FlorenceGardens.com | 228.539.5039 | 228.861.9500 | **Follow Florence Gardens on Facebook®**

*Florence Gardens is located on O'Neal Road in Gulfport — 1.7 miles west of Hwy 605 and 3.0 miles east of Hwy 49.
Listed by Bayou Realty, LLC — Brokers Protected*





Also available:



3 BED, 2 BA
1440 SQFT
\$158,900, plus lot



3 BED, 2.5 BA
2114 SQFT
\$221,900, plus lot



3 BED, 2 BA
1633 SQFT
\$174,700, plus lot



FLORENCE GARDENS

New neighborhood. Old charm.

MODEL HOME OPEN DAILY — Weekdays 1:00 p.m. to 5:00 p.m. | Weekends 2:00 p.m. to 4:00 p.m. | *or by appointment*
www.FlorenceGardens.com | 228.539.5039 | 228.861.9500 | Follow *Florence Gardens* on Facebook®

Florence Gardens is located on O'Neal Road in Gulfport — 1.7 miles west of Hwy 605 and 3.0 miles east of Hwy 49.

Listed by Bayou Realty, LLC — Brokers Protected

