

# THE COTTAGES at FLORENCE GARDENS

*now under construction*



## EACH COTTAGE FEATURES:

- Access to a spacious, shared front courtyard that creates a "neighborhood-within-a-neighborhood"
- Guest Gate access to private side-yard for entertaining
- Ecofriendly construction materials
- Optional Outdoor Kitchen

## FLORENCE GARDENS AMENITIES:

- Saltwater Pool
- 27-acre Lake Florence, with pier and pavilion
- Community Garden with seasonal produce
- Magnolia Hall events center
- Market District coming soon

**AVAILABLE THIS FALL! ASK ABOUT INTRODUCTORY PRICING.**

## "THE MYRTLE"

*now under construction on lot 36*

**3BED/2.5BA**

**2296 SQ FT**



## FEATURING:

- Large master suite downstairs
- Study on first floor overlooking side yard and shared courtyard
- Built-in writing desk in nook near kitchen
- Upstairs common area perfect for a playroom
- Stainless steel appliances, granite countertops

*constructed by:*



MODEL HOME OPEN DAILY—Weekdays 1:00 p.m. to 5:00 p.m. | Weekends 2:00 p.m. to 4:00 p.m. | *or by appointment*  
**www.FlorenceGardens.com | 228.539.5039 x1 | 228.861.9500 | Follow Florence Gardens on Facebook®**

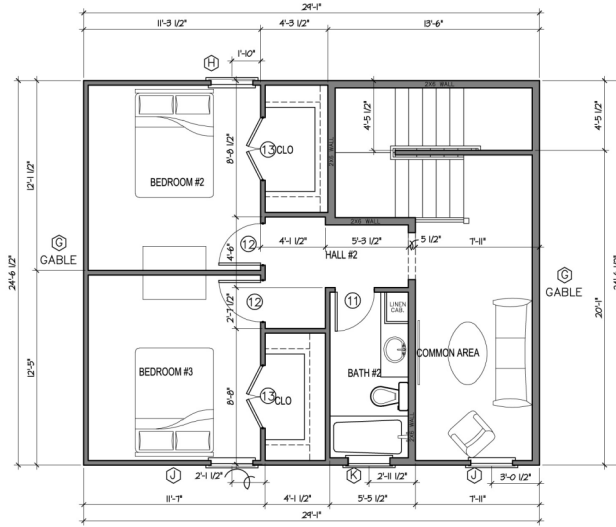
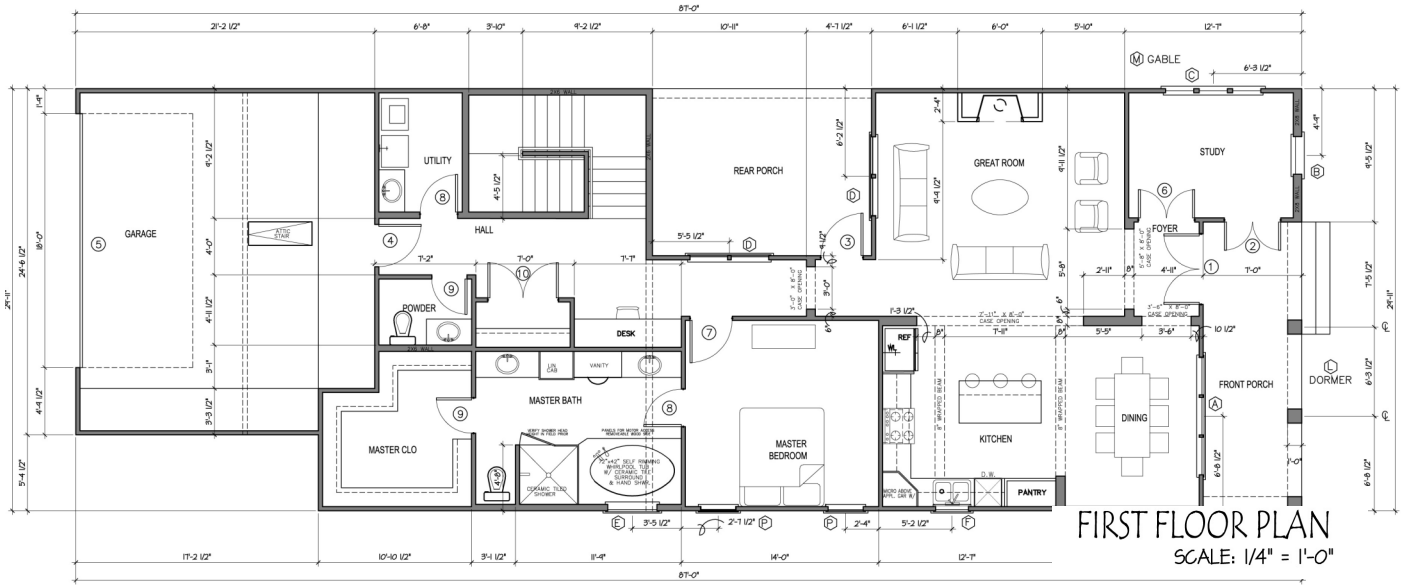
*Florence Gardens is located on O'Neal Road in Gulfport—1.7 miles west of Hwy 605 and 3.0 miles east of Hwy 49.*

*Listed by Bayou Realty, LLC—Brokers Protected*



## FLORENCE GARDENS

*New neighborhood. Old charm.*



MODEL HOME OPEN DAILY—Weekdays 1:00 p.m. to 5:00 p.m. | Weekends 2:00 p.m. to 4:00 p.m. | or by appointment  
[www.FlorenceGardens.com](http://www.FlorenceGardens.com) | 228.539.5039 x1 | 228.861.9500 | Follow *Florence Gardens* on Facebook®

*Florence Gardens* is located on O'Neal Road in Gulfport—1.7 miles west of Hwy 605 and 3.0 miles east of Hwy 49.

Listed by Bayou Realty, LLC—Brokers Protected



**FLORENCE GARDENS**

*New neighborhood. Old charm.*